

Suggestion to Bring In Authorities On Town Gov't.

Mayor Tully Suggests That Bayard Faulkner, Author Of Charter Study Law And Other Town Gov't. Men Be Asked To Charter Study Meeting

It was suggested by Mayor Tully Wednesday, that Bayard Faulkner of Montclair, author of New Jersey's municipal charter study law, and other leading authorities on municipal government revision and reorganization, be invited to address the proposed charter study meeting of the Belleville Committee for Young Men in Government.

In a letter to Arthur R. Lautz, temporary chairman for the young men's group, Tully expressed the hope that the meeting and the entire charter study movement will be open to all groups and segments of the town's population as he has previously urged. He asked that an invitation be extended particularly to the women voters of Belleville.

"No doubt this is your desire also," Tully stated in the letter and he emphasized women voters' inclusion should be made clear since the recently formed group implies that it is only for men.

In response to Lautz's request for aid in obtaining a place for a public charter study meeting, the mayor said he will consult the town attorney and the town hall committee to see if such meeting can properly be held in any town-owned building. In any event, he said, provision could be made somewhere for a public town meeting.

To Lautz's request for help in obtaining a charter petition headquarters, the mayor said that he hoped a properly drawn resolution to place the charter question on the ballot would be prepared by the town attorney in time for action at the next community meeting.

"As you know I moved to have such a resolution drawn at the last meeting, and I shall vote for it as soon as it is prepared and presented in proper form," Tully wrote Lautz. "If the resolution passed, there will be no need to circulate petitions on the charter study question, because the question then will go on the ballot automatically. If the resolution is not passed, we may have an early meeting before the first of the year as you suggested."

MORE ENTRIES FOR DISPLAY CONTEST

Displays Will Be Judged In Week Between Christmas & New Year For Latecomers

There has been an increasing response to the Recreation Department Home Christmas Display Contest. Many of the town's residents have entered their displays for the week between Christmas and New Year. Entries in the contest will close Tuesday, December 22. The contest is open to all residents and can appear in this paper before Christmas.

It is necessary to enter the contest in order to be eligible for the principal prizes. Just call Sgt. Recreation Robert E. Cook, at PL 9-3422.

Following is a list of names and addresses of those who have entered to date:

Mr. Joseph Costa, 21 Columbus Avenue; Mrs. Joyce Coleman, 68 Joram Lane; Mrs. G. Lannon, 422 Tenth Street; Mrs. A. Silvestri, 440 Greylock Parkway; Mr. and Mrs. Fred Job, 47 E. 1st Street; Mrs. Anthony Vance, 54 Columbus Avenue; Mrs. A. Blasi, 15 Continental Avenue; Mrs. Stephen Martin, 8 Crescent Terrace; Mr. John V. Zepka, 456 Joram Lane; Mr. and Mrs. S. Fusaro, 412 Tenth Street; Mrs. E. F. Fozzono, 67 Sanford Avenue; Mrs. Michael Antonelli, 61 Continental Avenue; Mrs. William F. Fozzono, 67 Sanford Avenue; Mrs. Elena Pace, Mrs. J. Resciniti, 96 Clinton Street.

One-Family Development

A development of one-family dwellings in the Greycliff Parkway-Mitchell and Streets area, north of Municipal Stadium, has been authorized by Building Inspector, Thomas Greco.

The plan is to erect by Timothy Homes, Inc., of Clifton. Their structure will be of a type similar to those in the two previous developments at the Columbia Terrace and Chestnut Street areas by the same builder.

The estimated cost of the homes is \$9,000. The location is in a "B" zone.

There are just a few days left for the kiddies to mail their letters to Santa. Each year Santa requests that the Recreation Department help him handle his mail in Belleville. This year, as always, the Recreation Department has placed a special Santa's Mail box in front of the town hall to receive the youngsters' letters to Santa. Santa, in turn, will answer each letter. The letters will be delivered to Santa by the Recreation Department on the morning of the Christmas Eve service.

The Student's Recognition Day service will be in honor of college students returned for the holidays. It is planned that a number of the students will participate in the service which will be held on the same day, at 4:30 p.m., a program entitled "What Can I Give Him?" will be presented. This service is sponsored by the departments of the Sunday School.

On Christmas Eve, a service of carols and candlelight will be held at 11:00 p.m. in the church. This service will conclude at midnight. People of the community are invited to unite with the members of the congregation in this service of the resplendent on the silver night.

The Student's Recognition Day service will be in honor of college students returned for the holidays. It is planned that a number of the students will participate in the service which will be held on the same day, at 4:30 p.m., a program entitled "What Can I Give Him?" will be presented. This service is sponsored by the departments of the Sunday School.

On Christmas Eve, a service of carols and candlelight will be held at 11:00 p.m. in the church. This service will conclude at midnight. People of the community are invited to unite with the members of the congregation in this service of the resplendent on the silver night.

REPRESENTATIVES OF CIVIC GROUP SEE POSECUTOR

Delegation Of Women Of Riviera Park Association Have Satisfactory Talk

A delegation of women representing the Riviera Park Civic Association of Belleville visited Prosecutor Webb of Essex county at the court house in Newark, Tuesday for the purpose of inquiring whether the prosecutor had terminated or was continuing the investigation of town purchasing practices and Board of Education. Prosecutor Webb has succeeded former prosecutor Edward Faulkner, now a county judge, who originally handled the matter.

Webb told the delegation of eight women that he expects an early completion of his investigation and that he will determine what further action he will take in the probe after analyzing final reports of his investigators.

Mrs. Dolores Denato of 172 Fremont Street—spokesman for the delegation, said the conference was "very satisfactory."

BD. OF DIRECTORS RE-ELECTED IN RESISTOFLEX CORP.

Entire Board Back And All Officers Re-Named At Stockholders Meeting

Edgar S. Peierls, president, Resistoflex Corp., announced last Friday that the entire board of directors was re-elected and all officers re-named at the annual meeting of the Board of Directors. The stockholders also approved the company's policy of reinvesting earnings in the company in preference to dividends.

The directors include Laurent Oppenheim, Jr., industrial consultant, chairman; John L. Garhart, coal mining official and consultant; Irvin Hood, partner, Grimm & Co., investment bankers; Herman E. Krebs, senior vice president; Ralph R. Laffo, president, Fulcrum Products, Inc.; George W. Newgas, general counsel and member of Newgas, Frisch, William B. Paul, member, Paul, Lawrence & Rock; Peierls; and Giles S. Rich, partner, consulting, member of Churchill, Rich, Weymouth & Engle.

In addition to Peierls and Krebs, the officers include Alexander N. T. St. John, vice president; Mrs. Florence V. Smith, secretary; Joseph A. Gentile, treasurer; Raymond H. Liebold, comptroller; and Newgas.

Dividend Declared

The board of directors of the Fidelity Union Trust Company declared Wednesday, a quarterly dividend of sixty cents (60c) on its common stock.

The dividend is payable February 1 to stockholders of record at the close of business on January 15.

Christmas Spirit Grows As Display Is Set Up

Santa and nine cavorting reindeer are now perched on top of the marquee of Municipal stadium to command a view of the nativity scene below them. This unique display, requiring hours of devotion, has drawn attention already. As each day merges into night, the scene is illuminated to spread its magic.

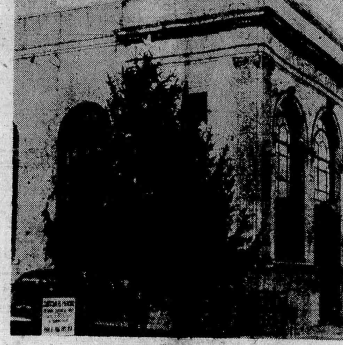
Its creation has involved a large number of people, making it a true, meaningful community project, and one in which all of Belleville may take a great deal of civic pride.

The idea took form with Robert M. Zepka, president of the Recreation Department, and Commissioner Elmer Hyde, Director of Public Parks and Property.

Creation sprang from articles Helen Del Grosso, Jack Gibbs, Madeline Seabauer, Walter Garvey, Rhoda Lyda, Dawson Bloedel and Carol Yadin who were led by Roberto Valentino and P. Webster Diehl. The display was erected by maintenance men Andrew Lukowiak, Joseph Flanagan and Johnny Gesario.

In addition to the above, others who assisted in the project were: Carpenter, electrician, voluntarily did a good part of the

Sentinel Of Christmas Spirit



Christmas trees of the People's National Bank stands at its traditional site. The tree was taken from an area in Bloomfield which will become part of the Garden State Parkway. It stands 30 feet in height.

Impartial Appointment To Education Board Asked

With the term of one of the present members of the Board of Education due to expire within the next few weeks, the Belleville Citizens' Association has asked Mayor Tully to appoint the new member without regard to his background, racial or political. Tully publicly stated that he would not re-appoint the present member upon expiration of his term.

The Association asks that the appointment be made in this manner due to the existing prosecutor investigation not only of the business office of the Belleville Board of Education but of the Board of Education itself.

At this critical point the Association feels confidence of parents and taxpayers has waned in the present Board.

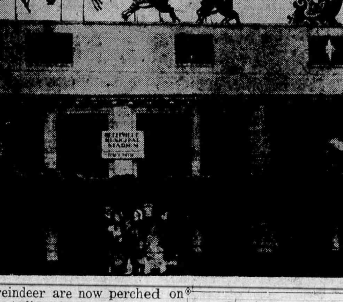
In a letter written to Mayor Tully by the group, it is stated that "with a referendum coming up for the new high school, you (Tully) will have an opportunity to demonstrate whether you propose to improve the Board or continue to step in in mediocrity."

"It is not the intention of the Association to recommend anybody for the post unless as requested," the letter said. "We believe you are fully capable of making an outstanding appointment if you have the will to do so."

The letter has to offer, in the light of the quality of their administration, does not in our opinion, represent the best that Belleville has to offer. We only conclude from this that the Board as presently constituted is no better or worse than you intended it to be," the letter reads.

Reference to the statements made publicly regarding the prosecutor's investigation of the Board of the effect that criticism directed at the Board of Education made public, the Association, in the letter, begs to differ the tactics. It feels that although the probe might not possibly expose any wrong, the present Board would have a weak victory.

Christmas Spirit Grows As Display Is Set Up



Mexican Subsidiary For Kidde Now Established

Establishment of a Mexico City subsidiary by Walter Kidde & Co. of Belleville was announced Wednesday by John F. Kidde, President.

Operating under a charter from the Mexican government, the new subsidiary will receive parts from the parent company as well as from local sources. It will assemble to Mexican distributors, maintain and repair recharging facilities and service the company's industrial fire detection and extinguishing systems.

John F. Kidde, is president of the new subsidiary and Carey H. Danon, Blighty, Calif., is vice president and general manager. Offices of Walter Kidde & Co., S. A., are located at Calle de la Paz 200, Santa Fe, Mexico.

Kidde Inaugurates, Mexico City

MORE VOLUNTEERS NECESSARY TO EXPAND PROGRAM

A Dozen More Women Or Men Needed To Aid Those Who Need Your Company

As chairman of the Gray Ladies, Belleville Chapter, American Red Cross, Mrs. Marion Poppel, of 79 Van Houten Place, stressed the need for more volunteers to assist in the expanded program of this particular Red Cross.

As Mrs. Poppel pointed out, services are being provided both at the East Orange Veterans Hospital, and Essex County Isolation Hospital and at least a dozen more volunteers either men or women could be used to advantage. At Soho particularly, where a wing has been opened up for elderly patients suffering from arthritis, rheumatism, and similar non-contagious illnesses, the Gray Ladies of the Red Cross are sorely needed. Many of these are just lonely, or want a letter written, or want someone to play checkers with them—simple little tasks that help them pass the time away more pleasantly.

If you have some spare time—men or women of Belleville—why not share it with others by becoming a Volunteer Gray Lady (or Gray Man). This would seem to be an auxiliary in reverse, since the Gray Ladies are the principal group, and the men help them. Call Mrs. Poppel at PL 9-5408 or call the Red Cross if you are unable to reach her. This particular "Good Will" activity of the local Red Cross group.

ROTARY AND LIONS CLUBS HAVE JOINT XMAS MEETING

Luncheon At For-Hills Restaurant Highlighted By High School Choral Group

The Rotary and Lions groups joined for their annual Christmas event, the For-Hills restaurant, yesterday.

The gathering's invocation was delivered by Rev. Peter Decker, pastor of the First Methodist Church. Evan Thomas, president of the Rotary, and Wilfred Yudin, Lions president, extended their groups' season's greetings. A prelude to the luncheon festivities.

The ubiquitous Santa was there with member gifts and "Bakers Dozen" a singing group from Belleville High School, under the direction of Mrs. Mildred Marks, their teacher. The first group under direction of Mrs. Shirley Rose, music supervisor, will sing "To Bethlehem" by Charles Villiers, and the ever popular "Christmas" an English Carol.

The Six B chorus directed by Mrs. Alice Hall will offer "In The Merry Month of December" and "Alois in a Manger" by J. S. Phillips. Soloists of Six B are James Keller, and William Rich.

The seventh and eighth grades Club under direction of Miss Shirley Rose and Miss Marion Muncy accompanied, will sing varied Christmas vocals, including "The First Noel," Spirituals, Hymns, and the ever popular "White Christmas" by Irving Berlin.

CANA CONFERENCE HOLDS MEETING

Conference Was Discussion Of The Family Relationship; 18 Couples Attended

Last Sunday the third of 18 couples met to make the Cana Conference, which was held at St. Peter's Church, of which Rev. Edgar A. Kelly is pastor. Father John P. Hourihan, Pastor. Only married couples were invited.

He attended a First and Second Cana Conference were eligible to make this one. Father John P. Hourihan conducted the Conference which was a discussion of the family relationship, the concrete aspect of the Christian viewpoint towards economics in the home, and up the social structure.

Refreshments were served by the following committees which arranged the conference: Mr. and Mrs. Joseph Kearny, Invitations; Mr. and Mrs. Edward Mahler, Refreshments; Mr. and Mrs. James Bradley, Decorations; Mr. and Mrs. James McDonnell, Reception; and Mr. and Mrs. Edward Mahler, Entertainment.

After refreshments a round table discussion was held whereby the group was able to express his opinions on the concrete aspect of marriage, and incorporate many new ideas into the basic views brought forth by the Conference.

At the invitation of Jack Boyd, chairman of the Lay Committee of the Belleville School System, the Rev. Father John H. Wightman celebrated Benediction of the Most Holy Sacrament. The couples were led in the prayer of the Consecration of themselves and their families, to the Sacred Heart by Father Hourihan.

The following couples attended: The Messrs. and Mesdames Hugh F. and Mrs. P. Hourihan, Mr. and Mrs. Walter Denman, Raymond G. and Mrs. Gerald Jensen, Joseph Kearny, and Mrs. Peter Piotrowski, Kenneth Miller, Thomas Mooney, Robert Nelson, Robert O'Brien, and Mrs. Peter Piotrowski, and Jesse Starkman. Reverend Mr. Timothy Hourihan, brother of Father Hourihan, will be officiating at the Christmas Eve service to be held on December 24, 8:00 p.m.

The Committee was favorably impressed with the plan presented to the Board of Education by the teachers' association, and wrote a letter to the Board recommending that the plan be adopted.

Teachers Here Request Needed Salary Increment

Ask Raise In Minimum Salary And Proper Placement On Salary Guide Which Has Been Sorely Neglected

A request to correct the existing inequities of the salary guide has been made to the Board of Education by the Salary Committee of the Belleville Teachers Association at a recent meeting of the two groups. The inequitable fact of Belleville Teachers' inadequate salary position has brought this about.

The committee asked that a plan be adopted for placing all teachers on the salary guide within a two year period and that those who are already on, be placed in their proper notch. Also, new teachers with experience were asked to be hired on the salary guide rather than on the old salary guide.

A third proposal was made for a \$200 increment rather than the \$100 increment to be given to teachers who further educational qualifications by obtaining higher degrees.

The committee also asked that the minimum salary for teachers be raised from \$2,800 to \$3,000 a year in order to place Belleville in a more favorable position in the competition for securing new teachers in Essex County.

Majority Of Guide
Harold Dufford, chairman of the Salary Committee, said that while the salary guide now in force is a representative one in Essex County, there are many inequities. Only 39 teachers of the Belleville School System are actually on the Guide. The committee showed the Board statistics of the number of teachers in categories of amounts of salary guide in figures ranging from \$1,500 to \$1,150. Concentration is in \$850, with 10 teachers in the bracket. That is, fifty teachers are receiving pay \$350 short of the figure designated on the salary guide. The next concentration is in \$650 with 21 teachers.

The committee showed that the cost of incorporating the proposed salary guide would be \$1,150, the amount of increase for the year 1954-55. Under the new plan the amount of increase for the year 1954-55, would be approximately \$34,650 above the normal increments while the second year, 1955-56, it would be only \$24,500, after which all teachers would be either on the guide or on the maximum.

Raymond Smith, president of the Belleville Teachers' Association, pointed out the discrepancy in the figures prepared by the New Jersey Education Association, Belleville Chapter, and the Essex County in regard to average teachers' salaries. The average salary for teachers in Belleville is \$4,067, while in Newark, Bloomfield is \$4,487, in Newark, \$5,001, and in Nutley it is \$4,286.

Low Pupil Cost
He further stated that as far as the cost per pupil is concerned, Belleville is next to last in Essex County with a \$278 per child figure. For Livingston, with its serious population problem, High Belleville with an expenditure of \$259 per pupil. With this low cost it seems equitable that the salary deficiency should be met.

Smith declared that other communities in the immediate vicinity spend much more than Belleville for the education of their children. Bloomfield spends \$353 per child; Newark, \$387; and Nutley, \$297.

He summarized his statements by saying that the salary position in Essex County is not a favorable one and unless improvement is shown, it will be difficult to maintain the present high standards.

Favored By Board
Board of Education members are sympathetic with the teachers' association under the guidance of outgoing President, Sid Godfrey. The Board has never received a group of Association members will go to this organization with a whole sackful of gifts—carried by property by the outgoing Santa Claus in the form of Incoming Association President, Nick Puccio. And a service will be rendered that presents either All of them have been carefully picked and personalized for each of the boys and girls.

The gift committee is headed by Walter Hartsock, Don Clark and Marco Minich. The presentation will be at 3 p.m. on December 20.

Timely Topic Tonight
Dr. Raab At Synagogue
The "Story of Christ—History and Legend" will be the topic of the lecture to be delivered by Dr. Albert L. Raab, rabbi of Congregation Ahavath Achim, at services tonight, at 8:30 o'clock, at the Synagogue.

Rabbi Raab will officiate and a service will be held in the choir, under the direction of Miss Doris Cohen.

An "Oneg Shabbat" will follow the service on the vestry room of the Synagogue. Hostesses for the evening will be Mrs. Benjamin and Mrs. Raab.

There are 36 children in The Orphan's Home at 529 Washington Avenue, in Nutley. Like most kids, they look forward to Christmas as a cause, after all, Christmas is a time for kids.

But although these kids read and all others to the color and spirit of the season, there's a difference.

Orphanages usually can offer very little at Christmas, and this Orphanage is particularly poor. As a matter of fact, these kids as a group, have never received a present before. They range from five years of age to fifteen.

Well, something has finally been done about this—thanks to the generosity of the Essex County Association under the guidance of outgoing President, Sid Godfrey. The Board has never received a group of Association members will go to this organization with a whole sackful of gifts—carried by property by the outgoing Santa Claus in the form of Incoming Association President, Nick Puccio. And a service will be rendered that presents either All of them have been carefully picked and personalized for each of the boys and girls.

The gift committee is headed by Walter Hartsock, Don Clark and Marco Minich. The presentation will be at 3 p.m. on December 20.

Timely Topic Tonight
Dr. Raab At Synagogue
The "Story of Christ—History and Legend" will be the topic of the lecture to be delivered by Dr. Albert L. Raab, rabbi of Congregation Ahavath Achim, at services tonight, at 8:30 o'clock, at the Synagogue.

Rabbi Raab will officiate and a service will be held in the choir, under the direction of Miss Doris Cohen.

utes West 60.02 feet to the westerly li
of Magnolia Street; thence along the ear
South 40 degrees 1 minute West 350.
feet; thence South 51 degrees 45 minutes

utes West 60.02 feet to the westerly li
of Magnolia Street; thence along the said
South 40 degrees 1 minute West 350.
feet; thence South 51 degrees 45 minut
East 60.02 feet to the easterly line
Magnolia Street and the point and pla
of beginning.

BE AND THE SAME are hereby vacat
and any and all public right or rig
therein arising from any dedication of
above described premises by deed
otherwise are hereby released and
tinguished.

Section 2. This ordinance shall take
effect immediately after final passage
publication in accordance with law.

12-18-53 Fee: \$17.
SURROGATE'S NOTICE
ESTATE OF HENRY N. HERMAN, C
ceased.
Notice of Settlement
Notice is hereby given that the s
counts of the subscriber, Trustee und
the Last Will and Testament of HENR
N. HERMAN, deceased, will be audit
and stated by the Surrogate and report
for settlement to the Essex County C
Probate Division, on Tuesday, the 22
day of December next.
Dated: November 18, 1953.
FEDERAL TRUST COMPAN

LINDABURY, STEELMAN & LAFFERTY,
Attorneys
24 Commerce Street
Newark 2, N. J.
12-24 Fees: \$8.

SURROGATE'S NOTICE

ESTATE OF WILLIAM H. McNIGHT
deceased.

Notice of Settlement

Notice is hereby given that the accounts of the subscribers, Trustees under the Last Will and Testament of WILLIAM H. McNIGHT, deceased, will be audited and stated by the Surrogate on

Reported for settlement to the Executive County Court, Probate Division, on Tuesday, the 5th day of January next.
Dated: December 3, 1953.
PEOPLES NATIONAL BANK & TRUST COMPANY OF BELLEVILLE, INC.
BENAS ALBERTA ROBINSON
LOUISE KIN
KEENAN & FINCH, Attorneys
394 Washington Avenue
Belleville, N. J.
TN 1-8 Fees: \$8.

SURROGATES NOTICE

ESTATE OF ROBERT A. BALDWIN, deceased.

Notice of Settlement
Notice is hereby given that the account of the subscriber, Executor of the will and testament of **ROBERT A. BALDWIN**, deceased, will be audited and stated by the Surrogate and reported for settlement to the Essex County Court, Probate Division, on Tuesday, the 5th day of January next.
Dated: November 19, 1953.
WILHELM L. BALDWIN
Myrd & Myrd, Attorneys
744 Broad St.
Newark 2, N. J.
TN 42-31
Fee: \$8.



1953

den's
s always been a guarantee of
ects.
or, you're always guaranteed
to be good.
DUCTS OF NEW JERSEY
Jersey Humboldt 3-374
Holiday Stock



Accessories

Belleville, N. J.

Grounds



Newark, N. J.

D & J MOTORS. 25 Washington Avenue. Belleville

LOCAL ARTIST RECOVERING FROM ACCIDENT

Nancy Crisp In Virginia Hospital After Auto Mishap Over Thanksgiving

Nancy Crisp, Belleville artist, in private life Mrs. Allan H. Crisp of 238 New Street, is recuperating in the University of Virginia Hospital at Charlottesville, Virginia, from injuries received in an automobile accident on November 27, while returning with her husband, Allan, and son, Robert, from a Thanksgiving visit to Williamsburg.

Mrs. Crisp's nose and jaw were fractured, and one of her vertebrae is slightly out of adjustment, which will require placing her in a cast for at least six weeks. It is hoped that she can be brought by ambulance and treated at St. Barnabas Hospital in Newark for Christmas.

Mr. Crisp and Robert were hospitalized for a number of days, but returned to Belleville on December 7th. The Crisps had taken delivery on a new Packard Clipper the night before leaving for Williamsburg (Nov. 24), which was damaged beyond repair. They were given invaluable assistance in Charlottesville by a former Belleville High School athlete, Walter Smith, football coach and teacher at the Charlottesville High School, and brother of Raymond Smith, member of the local High School faculty.

Special Christmas Service At Fewsmith Memorial

A special Christmas Eve worship service will be held next Thursday at the Fewsmith Memorial Presbyterian Church at ten o'clock.

The program will feature the kodachrome filmstrip "O Holy Night" which is the authentic and dramatic presentation of the Christmas story covering the incidents from the decree of Caesar Augustus to the visit of the Three Wise Men.

There will be singing of the Christmas Carols, special music by the Senior Choir and the ceremony of the lighting of the candles by the congregation. Rev. James K. Morse, pastor will conduct the worship. Everyone is cordially invited.

Rutgers Admissions Officer Visits Belleville School

On Wednesday, December 9, Mr. Guy Fenstermacher, assistant director of admissions at Rutgers University, Newark, visited Belleville High School and spoke to approximately 15 seniors interested in attending a local college. Mr. Fenstermacher described the admissions policies and scholarship program at Rutgers.

A question-answer period followed. Mrs. Duggin, senior counselor, attended the meeting.



ACME FOODS

For Christmas Needs!

OPEN TUES. & WED.
DEC. 22 & 23, UNTIL 9 P.M.

Lancaster Brand Extra Fancy Northwestern

TURKEYS

Regardless of price, Acme guarantees that Lancaster brand turkeys are the cream of the nation's finest flocks. Unexcelled for quality and flavor.



NEW YORK DRESSED	Hens 16 lbs. & under	55¢ lb.	Toms 18 lbs. & up	43¢ lb.	OVEN READY	Hens 14 lbs. & under	63¢ lb.	Toms 16 lbs. & up	53¢ lb.
BELTSVILLE TURKEYS (New York Dressed) lb. 55¢ — (oven ready drawn) lb. 63¢									

LEGS of LAMB

Enjoy a top-quality Acme leg of lamb for dinner this week-end. Serve with Ideal mint jelly for extra flavor! Featured at all Acme Markets this week-end!

Loin Lamb Chops	87¢	Calves Liver	79¢	Fresh Frosted Fish	33¢	Fillet of Cod	33¢
Lamb Chops	67¢	Plate Beef	15¢	Ready for the pan! No fuss, no mess! All food, no waste! Try a package now!		Fillet of Haddock	43¢
Chuck of Lamb	35¢	Sausage Meat	45¢	Swordfish Steaks	69¢	Fillet of Perch	33¢
Stewing Lamb	69¢	Link Sausage	55¢	Salmon Steaks	69¢	Scallops	63¢
Boneless Brisket	12¢	Meaty Scapple	29¢	Halibut Steaks	59¢	Shrimp	75¢

SAVE 50%
Household Institute
Reg. \$11 Oval
Roaster
NU-LOOK GLASS COVER, 15-inch
\$5.49
With \$5 Cash Register Receipt and Certificate
18 1/2" Size \$7.99
18 1/2" Open Roaster \$3.49

Christmas Week Programs Listed For Reformed Church

Yesterday at 1:30 p.m. the Belleville Reformed Church was the scene of the Women's Missionary Society Christmas Party. Gifts were exchanged, a luncheon given, and the singing of Carols took place. Dr. Struyk conducted devotions.

Tonight at 8 p.m. the old Church will be decorated for Christmas. There will be a party for the children at the chapel at which Santa Claus will attend.

On Sunday at 9:30 a.m. services will be held at the chapel and at the church for children. The March of Children will be presented. At 10:50 a.m. Pre-Christmas services will be held. An address will be given by Dr. Struyk on the Thrill of the Advent of Jesus Christ.

On Christmas Day at 10:00 a.m. services will be held with the pastor giving an address on "The Royal King Arises." The congregation with the Choir will sing carols.

Dignified Funeral Service

AVAILABLE TO ALL
REGARDLESS OF FINANCIAL
CIRCUMSTANCES

NON-SECTARIAN

KIERNAN FUNERAL HOME
GEORGE F. KIERNAN
101 UNION AVE. BELLEVILLE, N.J.
PLYMOUTH 9-3503

PEAS FLAKO PEACHES ICE CREAM

GREEN GIANT

PIE CRUST MIX

Del Monte Sliced yellow cling Dairycrest

PEAS FLAKO PEACHES ICE CREAM

2 17-oz. cans 37¢
9-oz. pkg. 16¢
2 17-oz. cans 39¢
1/2 Gal. 99¢

SAUCE

DOLE PINEAPPLE
OCEAN SPRAY CRANBERRY
strained or whole berry

2 18-oz. cans 25¢
2 16-oz. cans 35¢
2 16-oz. cans 33¢
16-oz. can 35¢

CRANBERRY SAUCE R & R PLUM PUDDING

2 18-oz. cans 25¢
2 16-oz. cans 35¢
2 16-oz. cans 33¢
16-oz. can 35¢

OPEN FOR A LIMITED TIME FOR LUMP SUM INVESTMENTS

(Income Shares)
We Are Currently Paying
2 1/2% Interest

NORTH BELLEVILLE SAVINGS & LOAN ASSOCIATION
500 WASHINGTON AVE. BELLEVILLE 9, N. J.
Savings Insured Up to \$10,000 - Federal Savings & Loan Insurance Corp.

ALBERT H.

CANNED FRUITS, JUICES

Fruit Cocktail 30-oz. can 39¢
Pineapple Chunks 14-oz. can 19¢
Ideal Apples 30-oz. can 39¢
Prune Juice 32-oz. can 39¢
V-8 Cocktail 46-oz. can 37¢
Welch Grape Juice 32-oz. can 39¢

NUTS IN SHELL

Fancy Almonds 16-oz. cello bag 41¢
Diamond Walnuts 16-oz. cello bag 49¢
Brazil Nuts 16-oz. cello bag 49¢
Fancy Pecans 16-oz. cello bag 49¢
Mixed Nuts 16-oz. cello bag 49¢

CHRISTMAS CANDIES

Chocolates Virginia Lee 10-oz. box 79¢
Ant. Fruits & Nuts 25-1b. can \$1.79
Hard Candies Virginia Lee 8-oz. can 89¢
Xmas Candy Canes P.A.P. of 6 25¢
Brachs Mix 18-oz. cello bag 39¢
All-Filled Candy Brachs 18-oz. cello bag 39¢
Cream-Jellies Brachs 18-oz. cello bag 29¢
Hard Candy Brachs Gloria Mix 14-oz. can 29¢

COFFEE

STRONG 1b. can 91¢
MILD 1b. can 84¢
MEDIUM 1b. can 86¢

COOKIES, CRACKERS

Howdy Doody RUBY Sandwich Creams, 12-oz. pkg. 29¢
Keebler Saltines 1b. can 27¢
Chocolate Chip NABISCO 7-oz. pkg. 25¢
Fig Newtons NABISCO 7-1/2-oz. pkg. 29¢
Chocolate Puffs SUNSHINE 6-oz. cello 29¢
Chocolate Graham's SUNSHINE 6 1/2-oz. cello 29¢
Weston Canasta 3-oz. can 23¢
Delicia SUGAR WAFFLES 10-oz. pkg. 37¢

PICKLES, OLIVES

Pickle Spears COLONIAL 32-oz. bottle 29¢
Dill Pickles PICKNICK 32-oz. jar 33¢
Olives OLIVAR 7 1/2-oz. jar 39¢

PANTRY FEATURES

Herb-Ox Bouillon Cubes 3 1/2-oz. pkg. 29¢
Peanut Butter 1b. can 33¢
Black Boi Penna, Dulch 16-oz. can 37¢
Black Walnuts 1b. can 41¢
Bread Crumbs 2 5-oz. pgs. 15¢
Sunkist Concentrate for Orangeade 2 5-oz. pgs. 29¢
Q-T Frosting 30-oz. can 37¢
Cream-White Shortening 30-oz. can 37¢
Uncle Ben's Rice 1b. can 21¢
Liverwurst 1b. can 16¢
Cider 49¢ jar 79¢
Ideal Mince Meat 5-oz. can 39¢

BORMANN

PLUMBING HEATING
COMMERCIAL INDUSTRIAL
RESIDENTIAL
45 MERTZ AVE. PLYMOUTH 9-3247

JOHN G. YOUNG

Plumbing - Heating - Oil & Gas Burners
Kitchens Remodeled, Custom Built Cabinets
Leader and Gutter Work
Furnaces Vacuum Cleaned
Use Our Budget Plan For Payment
14 NEW STREET PLYMOUTH 9-1476

IRVINE AND SON FUNERAL HOME

276 WASHINGTON AVE., BELLEVILLE, N. J.
Telephone PLYMOUTH 9-1114

PRODUCE

ORANGES
Florida 5 lb. bag 35¢
Your Best Orange Buy. Bursting with Juice.

FROSTED FOODS

BEANS
Seabrook Frozen 10-oz. Pkgs. 43¢
Green Frenched

DAIRY

Sharp Cheese
Colored lb. 65¢
Feature of the week! Try it!

BAKERY

FRUIT CAKE
lb. 98¢
2-lb. pkg. \$1.95
Made with Louella butter! Our finest!

Bread Supreme 16-oz. 15¢
Save 5c a loaf! Finest quality! "Dated" for freshness!

All Prices Except Turkeys Effective Through Sat., Dec. 19th — Turkey Prices Effective Through Sat., Dec. 26th

Swift's Peanut Butter 12-oz. jar 37¢	Van Camp's Tenderoni 2 6-oz. Packages 23¢	Chicken-of-Sea Tuna Fish White Label 7-oz. can 41¢	Beech-Nut Cereal Food 4-oz. Package 16¢	Tabby Cat Food 15-oz. can 11¢
Diplomat Welsh Rarebit 16-oz. Glass 43¢	Wesson Oil 5 1/2-qt. Bottle 65¢ Bake your Gift!	Beech-Nut Baby Foods Strained All Varieties 5 1/2-oz. Jar 49¢	Swift's Prem 12-oz. can 45¢	Kleenex Tissues 2 Packages of 300 43¢
Van Camp's Spanish Rice 15-oz. can 19¢	M & M Candy-Coated Chocolate 7-oz. pkg. 25¢	Beech-Nut Jr. Foods Chopped All Varieties 6 7/8-oz. Jar 89¢	Vitamont Dog Food 16-oz. can 14¢	Lintit Liquid Starch 2 quart bottles 35¢ 1/2 gal. Jar 31¢
				Quarters Pound Carton 31¢

THE BELLEVILLE TIMES-NEWS
 ADVERTISING, NEWS AND BUSINESS OFFICE
 388 WASHINGTON AVENUE
 Published every Thursday by The Belleville
 News Corporation, Belleville, N. J.
 Telephone PL 2-2200
RALPH E. HEINZEN, EDITOR AND PUBLISHER

True Human Relations

His life has been a sound and solvent span; from quiet boyhood in the country town. He has reached out beyond its small confines to rich attainment, and the hand of fame has settled on his shoulder. He has known the satisfaction one may feel who earns his laurels and his livelihood by means of honest striving. He has never stooped to gainful methods at the grim expense of any fellow man. And he can look at all comers in the eye, and lend a hand where aid is needed. Mindful of the climb he has completed, he is always one To share his brief advantage in the sun.

Billy B. Cooper

Charity Fakery Exposed

Charity fakery has pocketed at least \$120,000,000 out of this year's record donation by the American public of \$4,000,000,000, a special New York State legislative committee has found.

Typically, the National Kids Day Foundation has raised \$3,978,000 in the last five

One Man's Opinion

Eisenhower By Atomic Pooling Plea Has Seized Initiative Of World Affairs And Its Effect Will Be Felt In Berlin Big Four Talks

BY RALPH E. HEINZEN

By his speech before the United Nations proposing the pooling of all atomic resources for the peaceful good of the world, President Eisenhower picked up the ball and ran.

Surely, no one was more shocked by the President's announcement at Bermuda of his intention to make the speech on his return to New York than was Churchill — unless it was Malenkov in his dream world behind the Kremlin walls. Within the time that it took him to make his speech, "Ike" seized the political initiative on a world level. His speech dwarfed Moscow's recent hollow boasts of their atomic potentials and capacities. His maneuver took away from Churchill whatever value he might have won from the Bermuda decision to hold a Big Four foreign secretaries conference in Berlin on January

The atomic pool plan was the first great Eisenhower since he assumed power nearly a year ago. It was this country's first great international initiative since President Truman launched the Point Four plan in his 1949 inaugural speech.

Since then we have pressed the North Atlantic Treaty Organization, which Eisenhower personally whipped into existence while still on duty in Europe, but it was a defensive measure, not a move for peace such as is the new proposal which takes as its premise the belief that there cannot be peace unless there is an end to the armaments race and unless there is a chance for coexistence between the U. S. A. and the U. S. S. R.

Washington's Strong Hand
 When the foreign secretaries meet, the strings, obviously, are pulled from without. Before the Eisenhower speech, it was more likely that the strings would have been pulled from London and Moscow, by Churchill's and Malenkov's hands. If the effects of Ike's dramatic speech last long enough, the Berlin talks early in January will be under very direct Washington pressure.

It should not take long for the West to find out if the Russians mean business when the Big Four foreign secretaries meet in Berlin — assuming the meeting comes off.

If the Russian start using the get-together for blundering and insist that the first order of business is getting Communist China into a Big Five conference, the West is going to call off the dogs. The meeting, at Messrs. Dulles, Eden, and Bidault see is for getting action on European unification, primarily, and Austrian peace, if possible.

Two German Elections?
 The West insists that there must be truly free, democratic elections in all Germany before other steps are taken toward unifying Germany and writing a peace treaty.

Moscow, from all of its propaganda, still insists that an all-German government must be formed from the existing two German governments which then would call and supervise elections in all Germany, each in its own zone. The Astenauer-Bonn government would have nothing to say about the poll in East Germany, under the Russian plan. The West goes from here how controlled elections would turn out. Hitler rigged his 98% election victories in the same way.

Can Before The Horse
 Each claim the other is putting the cart before the horse, but the fact is, Washington sees little constructive coming out of the Berlin meeting, since the

years and has spent only \$302,000 for its announced purpose of aiding needy children. The rest went into the pockets of the high pressure collectors. There are scores of other which are nothing but rackets.

The danger is that the legitimate charity welfare and service organizations will suffer from this exposure of fund-raising fakery. They are dependent upon public donations and they are worthy of our careful selection. The Red Cross, the United Drive, the March of Dimes are legitimate, carefully-controlled funds, as is, on a local level, the Nutley-Belleville Seals Sale. Father Flanagan's Boy's Town is worthy, as are the Salvation Army and the Cancer Drive, among those which solicit our generosity by mail. But there are others to which contributions should be made only on the basis of an inquiry.

When you receive key rings with your automobile license tags in miniature, or unsolicited pens or pencils with your name inscribed, send them back. You are on the "sucker lists" of those charity fakery who decline to give any details of their activities beyond a bland reference to "helping ex-servicemen" or "aiding underprivileged children".

Give generously to those agencies which we know and which take on their share of the welfare burdens here at home, but be stringent in your refusal to underwrite the charity fakery. Make them take you off their "sucker lists" and feel clean again.

R. E. H.

rect in the sense that Bermuda was not as perverse as Yalta. But from a source high within our State Department, we learn that several items were discussed quietly which appeared in no communiqué, yet may see later fruition. Among them:

1. The British proposal to effect a better integration among all anti-Communist and non-Communist groupings in Asia, India, Siam, Malaya, etc. No Pacific counterpart of the Atlantic Alliance is envisaged, but gradually increased cooperation and understanding of common interests and purposes.

2. Allied plans for concerted strategy at the Berlin sessions with the Soviet negotiators. How will the western allies counter Moscow's expected proposal for inter-European — not inter-Asian — pacts? How to handle Russia's demand for a subsequent Big Five conference including the Communist China? Plans for these contingencies are afoot.

3. The proposal to strengthen the United States supervisory mission to Indochina.

4. The British proposal to bring Germany into NATO as an alternative to BDC if the French finally fail to ratify the European army treaty.

A Little Unhappy
 One other item didn't show up in the Bermuda communiqué: Sir Winston Churchill's delay of several days in endorsing President Eisenhower's proposed United Nations speech. Sir Win-

Dulles' sharp warning to France, following the opening meeting of the twelfth session of the North Atlantic Council, this week, that if a European army, including West German contingents, was not established soon the United States would be forced into an "agonizing reappraisal of its own basic policies," made it clear that there is no deviation from Eisenhower's favorite theory of the Pan-European army.

Dulles made it clear that United States policy was not interested in establishing a European Defense Community of France, West Germany, Italy, Belgium, the Netherlands and Luxembourg merely for the purpose of gaining the accession of German divisions to Western defense.

Warns Bonn And Paris
 He declared Washington wanted to help prevent Western countries, and he said France and Germany, from committing suicide through a revival of their past quarrels. He thought the defense community would accomplish this major aim.

But, he concluded, if France and Germany should decide to commit suicide by blundering in to another war between themselves, they may have to commit it alone. He did not clarify this but in any language the warning is ominous.

By these words the Secretary of State exerted the strongest possible pressure on the five members of the Atlantic alliance whose governments already had initiated the defense accretion treaty to complete the difficult process of ratification.

The West German Parliament has ratified the treaty but the West German President has not yet signed it. The French Parliament has not yet debated or ratified it, but at Bermuda, Foreign Minister Georges Bidault promised a decisive vote in January. It is in Paris, by using France's strong Communist party, that the Kremlin hopes to debate the European army plan.

Since Yalta when belatedly, we learned that the Big Three had come to a lot of secret agreements which did not figure in the published communiqués, but which haunt us to this day, we have reason to be suspicious of all conference communique.

Daniel Any Secret Agreement
 An official spokesman at the close of the Bermuda conference denied that any secret agreement had been reached by the western Big Three. He was cor-

Scouts To Carol For The Patients At Soho Hospital

The Senior Scouts of Troop 19 will go Christmas caroling at the Soho hospital. The intermediate troop will join them and they will meet Mrs. Varhagen at 4:00 p.m. at the town hall Christmas Eve.

The girls are making toy dogs out of bars of soap and facecloths. These will be presented to children patients at the hospital.

Next Tuesday, there will be a Christmas party for the girls. There will be the exchange of gifts and a surprise dinner will be given by the committee which consists of Alice Jackson, Barbara Healy and Constance Tobia.

Talent Program Presented By The Fourth Graders

With an excellent committee of students to assist Mr. Otis Brown, instructor in Dramatics, in the rehearsals for a talent show, the Belleville High School

ston said he wanted time to think it over. Perhaps he felt he would have to face labor criticism if Mr. Eisenhower's report — an American atomic strength sounded at all belittling. But he was also a little unhappy that Bermuda was being backstaged by this bright new proposal and that proves that he was completely surprised when he, as in his football days at West Point, scooped up the ball and ran.

RELIABLE BUYS
RELIABLE CARS
RELIABLE NEW CAR DEALER

Serving Essex County for 31 years.

BELLEVILLE-NUTLEY BUICK COMPANY
BUICK
 86-88 Washington Ave.
 Nutley 2-0500

Dreaming of a White Christmas?

We can't promise you that, but we can tell you how you can make your house and garden glow with the spirit of Christmas. Stop at the nearest Public Service office and have a talk with us. We can give you practical suggestions on decorating for Christmas. Fill in the coupon and we'll send you booklets.

PUBLIC SERVICE

PUBLIC SERVICE, Room 8311
 80 Park Place, Newark, N. J.

Please send me literature on how to decorate electrically for Christmas.

Name _____
 Address _____
 A-23-53

students had an opportunity to attend a very enjoyable and well planned performance on Friday, December 12.

The Student Committee was composed of the following boys and girls: Harry Valente, Lorene Ross, Murray Glasman, Joan Durkee, Mary Lou Welsh, Artie Post, and Angelina De Costana. Robert Doyle was the master of ceremonies, and the following students performed: Ellen Anderson, Lenora Ferguson, Elaine Silkin, and Ann Vaughn, Bob Morse, Gloria Ciriello, Adelyn Zinna, Gary Glass, Carol Boldt, Lorene Ross, Carol Yocum, and Anita Godfrey. Connie Wynn, Ernie Materazzi and Dorothy Brown.

PROTECTION MAN'S CONFIDENCE IN INSURANCE PERROTTA AGENCY
 INSURANCE ADVISORS
 20 Washington Ave., Nutley NJ 2-5417

Beck's Television Column



Well, Glory Be! One manufacturer announced that he has a color TV set ready for immediate delivery, at the low, low price of \$1495. Come right on folks and plunk down your dough so you will be the first or one of the first to see glorious color, on a 14" screen.

No kidding, one factory salutes orders for their product at this price. (A small deposit will insure early delivery.) It does not seem to matter that all you will be able to see for a couple of years, is perhaps one to two hours transmissions during the day in color, the rest will continue to be black and white. A second hand 14" black and white set costs about \$60, it will receive color broadcasts in black and white without any alterations.

There are lots of people who think that next year they are going to buy a color TV set. A few thousand sets are expected to be made, at a price ranging from \$800, to \$1500. The screen size has started above, will be about 14". It will take about 5 years or more to get the "big" out of color TV and the price down within reach. Anybody who waits until he can buy color TV at the price of present day black and white sets, has a long time, to wait.

WE SELL THE BEST AND SERVICE THE BEST
BECK'S RADIO & TELEVISION
 Electronic Specialists for 30 years
 196 Franklin Avenue
 Nutley 2-2275

A&P's Big Values for Thrifty Shoppers

Libby's FROZEN FOODS
 Choose your favorite Libby's frozen foods from A&P! Wide variety of great values!

Chopped Spinach 2 14 oz. pgs. 33c	Orange Juice 2 6 oz. cans 33c	Sliced Strawberries 10 oz. 27c	Melon Balls 12 oz. 25c	Asparagus Spears 10 oz. 45c	Broccoli Spears 10 oz. 25c	Chopped Broccoli 10 oz. 21c	Green Beans 10 oz. 23c	Fordhook Lima Beans 10 oz. 25c
--	--------------------------------------	---------------------------------------	-------------------------------	------------------------------------	-----------------------------------	------------------------------------	-------------------------------	---------------------------------------

Dunhill Cigarettes
 King size carton of 10 pgs. 2.11

Palmolive Soap
 For toilet and bath 3 regular cakes 23c

Palmolive Soap
 Especially for the bath 2 bath cakes 23c

Sweetheart Soap
 For toilet and bath 3 regular cakes 23c

Sweetheart Soap
 Especially for the bath 2 bath cakes 23c

Ajax Cleanser
 With foaming action 2 14 oz. cans 23c

Heinz-Oven Baked Beans
 2 16 oz. cans 27c

Other Thrifty Heinz Foods...
 Tomato Ketchup 14 oz. 25c
 Cooked Spaghetti 2 16 oz. cans 29c
 Cooked Macaroni With cheese 2 16 oz. cans 33c
 Cream of Tomato Soup 3 11 oz. cans 32c
 Gherkins Sweet 7 1/2 oz. 31c
 India Relish 10 oz. 25c
 Pickles Sweet 7 1/2 oz. 29c
 Chili Sauce 12 oz. 35c

Libby's Baby Foods
 Strained 5 4 1/2 oz. jars 49c

Swift's Meats for Babies
 can 21c

Karo Syrup
 Blue Label 24 oz. bottle 23c

Mazola Oil
 For cooking and salads gallon 2.09

Mazola Oil
 For cooking and salads pint 35c quart 65c

BEECH-NUT BABY FOODS
 Strained 5 jars 49c
 Chopped 6 jars 89c

KRAFT'S PARKAY MARGARINE
 In 1/4 lb. Prints 16 oz. carton 31c

Want a big buy in fresh-tasting margarine? Come to A&P today for Kraft's Parkay!

Blu-White Flakes
 2 3 oz. 17c 9 oz. 23c

Colgate's Vel
 For laundry and dishes large 29c

Colgate's Fab
 large 29c giant 69c

Cashmere Bouquet
 3 regular 23c

Limit Liquid Starch
 2 quart 35c

Argo Gloss Starch
 2 16 oz. 27c

Chicken of the Sea Tuna Fish
 White meat 7 oz. can 39c
 Light meat 7 oz. can 37c

AP Super Markets
 THE GREAT ATLANTIC & PACIFIC TEA COMPANY

Niagara Laundry Starch
 12 oz. 19c

Statler Paper Towels
 jumbo size 300 sheet roll 33c

FOR A GRAND FEAST NEXT WEEK!

A&P is all set to help you set a festive table on Christmas and save time, steps and money. So be an early bird and start doing your Holiday marketing at A&P now, while you can shop extra quickly and comfortably. You'll find plenty to sing about in every department . . . flocks of fine foods for your feast . . . top-flight quality . . . bill-cutting prices. Come see . . . come save at A&P NOW!

A&P IS THE PLACE TO SAVE MONEY ON GOOD THINGS!

For Good Meals This Week!

Want more time, energy and money for Christmas shopping? Save all three at A&P, where you can get quick-fix foods for this busy week . . . quickly, easily and thriftily! Come see . . . come save at A&P!

A&P Has The Meat Buys!

"Super-Right" Quality Beef

RIBS of BEEF

Regular Style

In All Meat Departments

10" Cut lb. **53¢** 7" Cut lb. **59¢**

Boneless (No Fat Added) lb. **75¢**

Oven-Ready Ribs of Beef

In Self-Service Meat Departments 10" Cut lb. **63¢** 7" Cut lb. **69¢**

Round Pot Roast

One price . . . the advertised price . . . for all cuts of Round Pot Roast at A&P!

Top Round Roast or Steak . . . lb. **75¢**
Top Sirloin Roast or Steak . . . Boneless lb. **75¢**
Sirloin Steaks . . . Juicy, flavorful lb. **79¢**
Porterhouse Steaks . . . Juicy, flavorful lb. **85¢**
Ground Beef . . . Freshly ground lb. **39¢**
Rib Steaks . . . 10" cut lb. **63¢** 7" cut lb. **69¢**
Boneless Chuck Pot Roast . . . lb. **59¢**

Legs of Lamb . . . Regular style — in all meat depts. lb. **59¢**
Legs of Lamb . . . Oven-ready — In Self Service Meat Depts. lb. **67¢**
Loin Lamb Chops . . . lb. **89¢**
Breakfast Bacon . . . Sliced lb. **59¢**
Sliced Bacon . . . "Super-Right" 1 lb. pkg. **79¢**
Pork Loins . . . Rib end lb. **43¢** Loin end lb. **53¢**
Pork Loins . . . Rib half full cut lb. **53¢** Loin half full cut lb. **61¢**
Chickens . . . Broiling and frying — Regular style lb. **37¢**
Chickens . . . Sizes 2 1/2 to 3 1/2 lbs. — In Service Meat Depts. lb. **49¢**
Beef Liver . . . Broiling and frying — Ready-to-cook lb. **29¢**
Fancy Swordfish Steaks . . . Sizes under 3 lbs. — in all Meat Depts. lb. **29¢**
Specially selected lb. **69¢**
Available in Fresh Fish Depts.

Order Your Pilgrim Quality Christmas Turkey Today!

Want a Christmas turkey of top-flight quality at a bill-cutting price? Be an early bird and place your order today!

Thrifty Buys In Fruit & Vegetables!

Fresh Cranberries String Beans

Potatoes . . . Long Island or Maine 10 lb. **27¢** 15 lb. **39¢**
Florida Oranges . . . U.S. No. 1 grade, "A" size 5 lb. **39¢** 8 lb. **55¢**
Florida Grapefruit . . . Sweet, juicy 4 for **25¢**
Eating Pears . . . Medium size 2 lb. **25¢**
McIntosh Apples . . . Bosc 2 lb. **25¢**
Delicious Apples . . . All purpose 2 lb. **25¢**
Red Grapes . . . Red — Western 2 lb. **33¢**
Yellow Onions . . . California 1 lb. **19¢**
White Onions . . . U.S. No. 1 grade 3 lb. **10¢**
Sweet Potatoes . . . For boiling 2 lb. **17¢**
New Jersey 3 lb. **29¢**

Broccoli . . . Cape Cod 1 lb. **19¢**
Pascal Celery . . . From Florida Farms 2 lbs. **29¢**
Iceberg Lettuce . . . Western farms bunch **19¢**
Yellow Bananas . . . Regalo brand 1 lb. **19¢**
New Green Cabbage . . . Western farms 2 **29¢**
Yellow Turnips . . . Golden, ripe 2 lbs. **29¢**
Cucumbers . . . Southern lb. **5¢**
Salad Mix . . . U.S. No. 1 grade lb. **4¢**
Cole Slaw . . . Florida 2 for **13¢**
Sweet Apple Cider . . . Regalo brand 8 oz. cello bag **17¢**
Mott's brand 1/2 gal. **49¢**

A&P Has Grocery Values Galore!

Fruit Cocktail Cling Peaches

Hi-Ho Crackers . . . Sunbrite 16 oz. pkg. **31¢**
Reynold's Wrap . . . Aluminum 12" x 25 ft. roll **23¢**
Cranberry Sauce . . . Ocean Spray 16 oz. can **35¢**
Pumpkin . . . A&P fancy quality 2 **27¢**
Sweet Peas . . . Del Monte, Green Giant, Libby's 17 oz. can **41¢**
Golden Corn . . . Cream style 2 **35¢**
Whole White Potatoes . . . Del Monte, Green Giant, Libby's 17 oz. can **11¢**
Campbell's Tomato Soup . . . Baxter brand 10 1/2 oz. can **32¢**
Crisp Fig Bars . . . 3 **29¢**
Carolina White Rice . . . 1 lb. **19¢**
Marcel Sandwich Bags . . . 40 **20¢**

Nabisco Cookies . . . Chocolate Dip 7 1/2 oz. pkg. **21¢**
Presto Cake Flour . . . Self-Rising 44 oz. pkg. **37¢**
Flako Pie Crust Mix . . . 2 10 oz. **33¢**
None Such Mince Meat . . . 2 **39¢**
Plum Pudding . . . Richardson & Robbins 15 oz. can **35¢**
Del Rich Margarine . . . In 1/4 lb. prints lb. **31¢**
Bunnett Vanilla Extract . . . 2 **23¢**
Ann Page Extracts . . . Vanilla or Lemon 2 oz. bot. **23¢**
Octagon Laundry Soap . . . 12 1/2 lb. roll **8¢**
Cut-Rite Waxed Paper . . . 25 **25¢**
Marcel Pastel Napkins . . . 3 **25¢**

FOOD IS
THE IDEAL
GIFT!

Now, right before the holidays, your A&P makes it easy for you to send "just what they wanted" to friends who would appreciate a gift of food.

A&P is making available gift certificates in \$1 and \$5 denominations redeemable in any A&P Food Store in the United States.
BUY YOUR GIFT CERTIFICATES NOW

Holiday Treats

Ripe Olives . . . Libby's — King Size 2 **53¢**
Sweet Mixed Pickles . . . Manhattan 22 oz. **29¢**
Stuffed Olives . . . Ann Page — Queen size 7 oz. jar **45¢**
Bread & Butter Pickles . . . Mrs. Fanning's 15 oz. **23¢**
Dill Pickles . . . Libby's or Manhattan — kosher 22 oz. bot. **33¢**
Wilson Chopped Beef . . . 12 oz. can **39¢**
Armour's Potted Meat . . . 2 **27¢**
Liverwurst Spread . . . Stahl-Meyer 3 1/4 oz. **16¢**
Vienna Sausage . . . Armour's or Libby's 4 oz. **19¢**
Star Kist Tuna Fish . . . Chunk style 6 1/2 oz. can **35¢**
Anchovies . . . Flat or rolled. Imported 2 **23¢**
Old London Cheese Sandwich . . . 2 **23¢**
Adams Korn Kurls . . . A tasty snack 4 oz. bag **25¢**
Fritos . . . 4 oz. bag **25¢**
Planters Cocktail Peanuts . . . 4 oz. **33¢**
Maraschino Cherries . . . With stems 8 oz. bot. **33¢**

Dairy Favorites

Sharp Cheddar . . . Aged Over 1 Year lb. **59¢**
Large Eggs . . . Willmore Brown and White carton 1 dozen **65¢**
Cream Cheese . . . Philadelphia or Borden's 2 3 oz. **29¢**
Fresh Butter . . . Sunnyfield fancy creamery 1 lb. **79¢**
Imported Blue Cheese . . . Salt or Sweet (in 1/4 lb. prints lb. 75¢) brick **79¢**
Switzerland Swiss . . . Imported — sliced 1/2 lb. **53¢**
Kraft's Velveeta . . . Cheese food 1/2 lb. **33¢**

Frozen Foods!

Chopped Spinach . . . Birdseye 2 **33¢**
French Fried Potatoes . . . Baxter's 2 **29¢**
Ocean Perch Fillet . . . Cap'n John 16 oz. **33¢**
Fish Sticks . . . A&P pre-cooked — boneless cod 10 oz. **43¢**

Reduced for the Weekend!

Orange Juice . . . Old South — Frozen 2 **25¢**

A&P Super Markets
THE GREAT ATLANTIC & PACIFIC TEA COMPANY
Prices effective thru Sat., Dec. 19th in Super Markets and Self-Service stores only.

During Christmas Week

All A&P Super Markets and Self-Service Stores Will Be

OPEN TUESDAY and

WEDNESDAY to 9 P. M.

Bakery Treats



Cherry Pie . . . 1 1/2 lb. size **129**
Gold Bar Cake . . . Large 8" Size **249**
Chocolate-Iced **395**

Sweet Treats!

Chocolate Bars . . . Hershey or Nestle's box 50 Varieties **89¢**
Chocolate Bars . . . Hershey or Nestle's Economy size 2 **33¢**
Chocolates . . . Warlick — assorted 1 lb. **59¢** 2 lb. **1.15**
French Creams . . . Worthmore 12 oz. **29¢**
Christmas Stockings . . . 4 1/2 oz. **19¢**
Christmas Candy Canes . . . A-Z brand box of 18 **35¢**
Hard & Filled Candy . . . Kordey 14 oz. **29¢** 2 lb. **75¢**
Marshmallow Santas . . . Worthmore 6 oz. tray **27¢**

Dried Fruits and Nuts

Walnuts . . . Diamond Brand Large — In Shell 1 lb. cello. bag **49¢**
Calimyrna Figs . . . Jumbo or finger style 8 oz. **21¢**
Bromedary Dates . . . Pitted 1 lb. **39¢**
Fresh Dates . . . California 8 oz. **19¢**
Mixed Nuts . . . Sun-Glo brand — In shell 1 lb. **49¢**
Paper Shell Pecans . . . Large size 1 lb. **39¢**
Chestnuts . . . Imported Italian — for roasting 1 lb. **15¢**
Walnut Meats . . . Regalo brand 6 oz. cello bag **45¢**
Pecan Nut Meats . . . Regalo brand 6 oz. cello bag **39¢**

Beverage Buys

Yukon Club . . . Gingerale, Club Soda, Fruit Flavors — Plus deposit 2 **27¢**
White Rock . . . Gingerale, Club Soda, Fruit Flavors — plus deposit 2 **45¢**
Hoffman's . . . Gingerale, Club Soda, Fruit Flavors — plus deposit 2 **45¢**
Pepsi-Cola . . . Plus deposit 6 **37¢**
Tudor Beer . . . Premium Quality 6 **79¢**
Beer . . . Ballantine, Pils, Ruppert's, Schaefer, Trommer 2 **33¢**
Beer . . . Budweiser, Miller's, Pabst, Schlitz 2 **41¢**

Coca-Cola . . . "Coke's natural" 6 oz. bottles **31¢**
Canada Dry . . . Gingerale, Club Soda 2 **45¢**

Save on Famous A&P Coffee
Eight O'Clock . . . Mild and Mellow 1 lb. bag **84¢**
Red Circle . . . Rich and Full-Bodied 1 lb. bag **86¢**
Baker . . . Vigorous and Waxy 1 lb. bag **88¢**

CHRISTMAS SUNDAY

AT FEWSMITH

Three Services Held in Observance of Christmas At Fewsmith Memorial

Christmas Sunday will be observed in Fewsmith Memorial Presbyterian Church with three services. The Church School will hold exercises at 9:45 a.m. in all departments with special worship and dramatic presentations. At eleven o'clock the morning worship will feature music by both the Junior and Senior choirs and a sermon by Dr. James K. Morse, pastor on "The Mission of Christ." At 4:30 p.m. a special Vesper Service will be held and pupils from the Junior High School department will conduct the worship. Kindergarten and beginners students will be with Mrs. Robert Stivers, Jr. Primary pupils supervised by Mrs. Fred Holland will dramatize the Christmas story, the Junior department will give a choral reading.

Christmas Hours For Library

The public library will close Thursday, Christmas Eve, at noon. It will also be closed all day Friday and Saturday due to the Christmas holidays.

"Christmas Nativities" by Albert Koelsch, Carol Babb, Rona Rose, Edward Griwert, Robert Andersen and Walter Orth. Mr. Harold Ross, Jr., is superintendent. Mrs. James K. Morse will tell a Christmas Story. "The Best Gift" and the Senior Choir will sing. Everyone is cordially invited to a fellowship hour immediately following the service in the social hall. The Junior High School teachers will serve refreshments. The Junior Westminster Youth Fellowship will have a recreation program at 6:30 p.m. with a gift grab-bag and a visit from Santa Claus. The Seniors will have a forum on Christmas, lead by Miss Barbara Metcalfe. The group will take gifts and sing carols at the Crippled Children's hospital in Newark.

PRESENTATION OF "SANTA VISITS THE TOYSHOP"

Scene Of A Toyshop Window On Xmas Eve Will Be The Setting For Second Graders

On December 22, "Santa Visits the Toyshop" will be presented by the Second Grades of School One. The scene is a toyshop window Christmas Eve. Beginning with "The March of the Wooden Soldiers," each toy represented will become alive. The soldiers who will march are Herbert Adelmann, Robert Bankowski, Frank Ciccaro, Thomas Durrell, Leroy Edwards, Robert Haley, Peter Walker and Donald Worzel. The dancing dolls will include Linda Armstrong, Mary Ann Black, Carol Debroski and Irene Rij. Joseph Palotto will be the clown while Barbara Lidlow and Robert Fannin depict Raggedy

Ann and Andy. The two Christmas Bunnies will be Marianne Milano and Virginia Brenner. The two records will be Lorraine Messig and Sybil Prosper.

All these will be found in the toyshop owned by Anthony Hawley and visited by Santa Claus, Philip Dreck, Phyllis Cernero will be the Christmas fairy. Other in the group who will provide the singing as a background include Harold Dries, William Marsh, Florence Ritzman, Joyce Cheslham, Mildred Dulberger, Rose Marie Gephart, Leona Lindemuth, Christine Nori, Joanna Senkiw, Rosanna Tedesco. The teachers in charge are Stella Thomaides and Marie Viola. Indra Bryant, music supervisor, will accompany at the piano.

Movies At Hospital

Dr. Joseph D'Angelo, of Belleville, who is on the obstetrical staff at the Hospital of St. Barnabas, will show Christmas movies on Wednesday the 23rd, as part of the Christmas entertainment to take place at the hospital.

Delaporte & Mac Kinnon

PLUMBING - HEATING TINNING

70 Belleville Avenue
Belleville, N. J.
Phone Plymouth 9-4323

ATTENTION BELLEVILLE TAXPAYERS

PROMPT PAYMENT of current taxes is an important factor in keeping collection percentage up and the tax rate DOWN.

IF YOU OWE any 1953 taxes will you please arrange to pay them as soon as possible, and NOT LATER THAN DECEMBER 31, 1953.

BY MAKING prompt payments you will save interest charges at the rate of 7% per annum and help to strengthen the Town's financial position.

Your cooperation is respectfully requested.

JAMES J. TULLY

Mayor - Director of Revenue & Finance
Town of Belleville, N. J.

Two sure ways to speed long distance Christmas calls:

CALL EARLY

CALL BY
NUMBER



■ Again this Christmas we'll be swamped with Long Distance calls, for a telephone call is such a friendly way to say "Merry Christmas." And, as always, all of us will be doing our best to get your Christmas calls through quickly.

■ But, in spite of all we can do, some calls are bound to be delayed. That's why it's a good idea to make your Long Distance call before Christmas Eve or after Christmas Day.

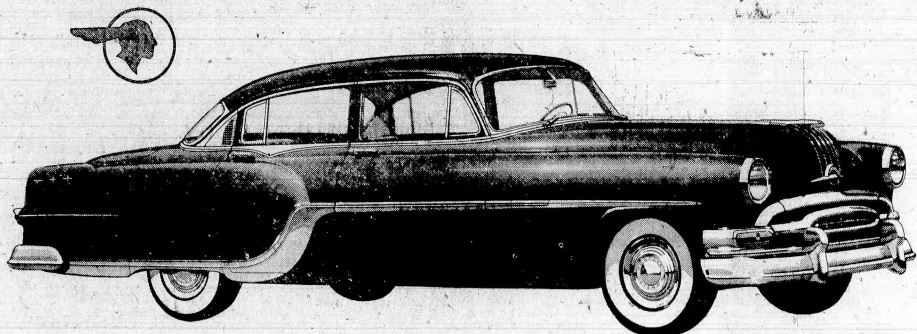
■ Calling by number whenever possible speeds long distance service, too.

from all of us
to all of you
a Very Merry
Christmas

NEW JERSEY BELL TELEPHONE COMPANY

PONTIAC PRESENTS FOR 1954

A Completely New Line of Automobiles!



The New Star Chief Series - Bringing New Values in Luxury Size and Performance Never Before Offered at the Price!

Biggest Pontiac Ever Built—214 Inches Over-All Length

Magnificent New Beauty, Inside And Out

New Custom-Styled Interiors—New Exterior Colors

Most Powerful Pontiac Ever Built

New Roadability And Driving Ease

New, Greatly Increased Cross-Country Luggage Room

Here is the first genuine luxury car ever to be offered in Pontiac's low price range!

As the biggest Pontiac ever built, the new Star Chief brings you all the generous added length required for peak roadability and riding ease. And this extra length provides a long, low, aristocratic silhouette like costly cars, brought to even greater beauty by a brilliant new treatment of Pontiac's exclusive Silver Streak. Interiors are in key. Here is the gracious, spacious look of luxury for which motorists have paid several thousands more

than the modest cost of the new Star Chief. Add to all this an even mightier Pontiac engine and you will understand why you should not only see, but drive, this magnificent new car soon.

See the completely new Star Chief this weekend, along with the wonderfully improved Chieftain Series—General Motors' lowest priced right and famous economy six. Together, they prove that whatever you prize most in a car, again in '54, dollar for dollar—you can't beat a Pontiac.

TO ADD TO
YOUR DRIVING PLEASURE
AND THE LONG-RANGE VALUE OF
YOUR CAR—PONTIAC OFFERS
A WIDE SELECTION OF
OPTIONAL EQUIPMENT*



Dual-Range Hydra-Matic
provides instant response in traffic, extra-economical cruising for the open road.



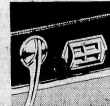
Pontiac's Power Steering
offers finger-tip steering ease for parking and slow turning, yet gives reliable safe road feel.



New Air-Conditioning
controls your car's temperature year 'round in minutes. Eight cylinder models only.



New Pontiac Power Brakes
let you stop faster with far less effort and foot movement. A major advance in safety.



New Electric Window Lifts
raise or lower front windows to any desired degree by simply touching a button.



New Comfort-Control Seat
adjusts to 360 different seat angles at a touch for the best driving position.

*Optional equipment and accessories available at extra cost.

On Display Now - with its Beautiful New Companion Car THE SILVER STREAK CHIEFTAIN

DOUBLE PROOF THAT DOLLAR FOR DOLLAR YOU CAN'T BEAT A Pontiac!

ARROWHEAD PONTIAC, INC.

645 WASHINGTON AVENUE

BELLEVILLE, N. J.